



LVES Home L Series

POWER YOUR HOME
POWER YOUR LIFE ”

3.2 kWh Low Voltage Battery



Super Safe and Reliable

- Top quality LFP battery
- Smart BMS and online-EMS

Easier Installation

- Compact modular design
- Less spare parts for plug and play installation & scaling up

Higher Performance

- Rapid charge and discharge ability
- Highest 100% DOD, much more usable energy

Smart Management

- 7/24 real-time monitoring, remote diagnosis and upgrading
- Fast configuration via APP/Platform

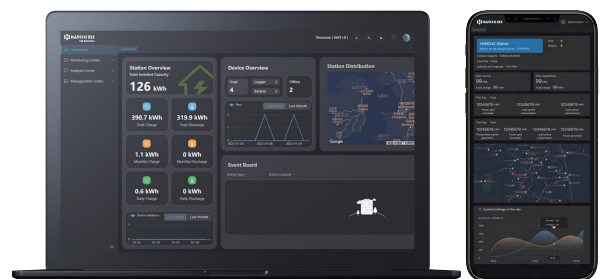
LVES Home L Series

Model	HOME-ESS-LV-3.2K
Nominal Energy	3.2kWh
Nominal Voltage	51.2V
Operating Voltage Range	43.2-57.6V
Cell Type	LFP(LiFePO4)
Dimension(W*D*H)	484*165*302mm
Weight	34.9Kg
Charging Temperature	From 0 to 50°C
Discharging Temperature	From -10 to 50°C
Depth of Discharge	100% DOD
Nominal Charge Current	40A
Nominal Discharge Current	60A
Maximum parallel number	16
Enclosure Protection Rating	IP54
Cooling Type	Natural convection
Humidity	≤95%
Warranty	10 years
Communication Port	CAN/RS485/WIFI/Bluetooth
Battery Safety	IEC 62619/CE
Transportation Certification	UN38.3

IoT Technology Smart Systematic EMS Based on AI

An all-round platform to power your life

- ✓ Smart control to optimize your energy allocation provide 24/7 automatic monitoring
- ✓ Thoughtful cloud service for preserving batteries providing remote diagnostics or upgrades
- ✓ Intelligent technology extends battery life anticipates and resolves potential problems



Product Info



Official Website

✉ info@hanchuess.com
☎ 0510-88865288

🌐 www.hanchuess.com
📍 No.588 Jinhui Road, Huishan District, 214177 Wuxi, Jiangsu, China