



LVES Home L Series

5.3 kWh Low Voltage Battery

Leading Technology

- ✓ CTP technology
- ✓ Advanced smart BMS and EMS
- ✓ All aluminum structure and stacked design

Top-notch Performance

- ✓ 100A rapid charge and discharge ability for each module
- ✓ Maximum 250A for a stacked system
- ✓ Higher DOD (95%) for more usable energy

Ultra Safety & Reliability

- ✓ Safer LFP battery cell plus aerosol fire-protection system
- ✓ Built in heat dissipation system ensure long-term stability

Excellent Design

- ✓ Galaxy touch screen
- ✓ Compact design with less spare parts
- ✓ Fast plug and play installation and easy to scale-up

Comprehensive Smart IOT Platform

- ✓ Creative IOT technology based on smart platform for online configuration, monitoring, operation and upgrading service

“Power Your Home
Power Your Life”

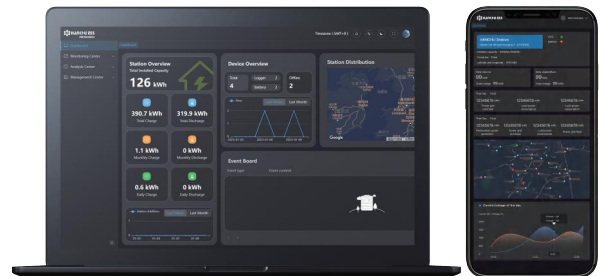
LVES Home L Series

Model	HOME-ESS-LV-5.3K
Nominal Energy	5.3kWh
Capacity Range	5.3kWh/10.6kWh/15.9kWh/21.2kWh/ 26.5kWh/31.8kWh/37.1kWh/42.4kWh
Nominal Voltage	51.2V
Operating Voltage Range	43.2-57.6V
Cell Type	LFP(LiFePO4)
Dimension(W*D*H)	650*330*175mm
Weight	≤45kg per battery module
Charge Temperature	From 0~50 C
Discharge Temperature	From -10~50 C
Depth of Discharge	95% DOD
Nominal Charging Current	100A per battery module
Nominal Discharging Current	100A per battery module
Safety	IEC 62619
IP Rating of Enclosure	IP65
Cooling Type	Natural
Humidity	≤95%
Warranty	5+5years
Communication	CAN/RS485/WIFI/Bluetooth
Transportation Certification	UN38.3/MSDS/DGM

IoT Technology Smart Systematic EMS Based on AI

An all-round platform to power your life

- ✓ Smart control to optimize your energy allocation provide 24/7 automatic monitoring
- ✓ Thoughtful cloud service for preserving batteries providing remote diagnostics or upgrades
- ✓ Intelligent technology extends battery life anticipates and resolves potential problems



Product Info.



Official Website

info@hanchuess.com

0510-88865288



www.hanchuess.com

No.588 Jinhui Road, Huishan District, 214177 Wuxi, Jiangsu, China